

I am delighted to send you the first AgriFood Charities Partnership Newsletter which provides its members of charities, colleges, universities and societies with news and insights.

The AFCP aims to support charities to accelerate skills and education, public education and new research in UK food and farming.

[Join Today to support AFCP in delivering even greater impact from charities for UK Food and Farming](#)



Charities Working Together to support British agriculture

This Newsletter, some forthcoming changes to the [AFCP](#) website and a much greater regional focus are part of the new AFCP initiatives being planned and delivered for 2018.

Our aim is to maintain stronger communications with our members, showcase them more prominently on the website and raise profile of the impact that the charitable sector is making on the food and farming sector.

With Brexit seemingly around the corner and the stark reality that UK agricultural productivity falls behind the rest of the world, there is an urgent need to accelerate the uptake of new science, new technologies and professional skills into the sector.

AFCP charities have a crucial role to play. They are small in comparison to some of the larger charities, typically investing far less than £1m per annum, but together they are significant in the impacts being made to

deliver new research, skills development and public education for UK Food and Farming.

Building on some very successful charitable collaborations in the eastern and south-west counties the AFCP is replacing the Annual Forum with Regional Forums throughout this year and next. By doing so, we seek to drive greater alignment to industry's most pressing needs and a charitable consensus to support them.

When the AFCP was founded nearly a decade ago, it was supported with generous grants and sponsorship from the sector including the NFU Mutual Charitable Trust and AHDB. We are grateful to them for providing the financial momentum that enabled the AFCP to drive greater collaboration and important new initiatives such as the AFCP and AHDB research awards.

The future of the AFCP must now rest on its members and the value it can deliver by helping to:

- Deliver greater impacts from charitable investments by working more closely together
- Align charitable investments to the most pressing needs of the sector
- Direct individuals to charities with objectives to fund research, public education and skills development



CLARION CALL FOR COLLABORATION

A clarion call for greater cooperation and partnerships to deliver the investment, influence and impetus to transform the UK Food and Farming sector was delivered by speakers at this year's AFCP Annual Forum on the role of charities in UK food and farming post Brexit, hosted by the University of Hertfordshire. The strength of the **speaker line-up** and an inspiring mix of more than 80 people representing a cross section of the industry and 20 different charities and 10 Universities reinforced the central uniting theme.

The Forum was in agreement that much greater transparency and connection across the funding sectors of Government, charities, industry and farmers is needed to accelerate the uptake of innovation and skills development in the industry.

Improved productivity and enhanced food quality are top priorities for Innovate UK and the AHDB. New government innovation loans of £50m, for later stage research and development with a clear route to market are now being rolled out.

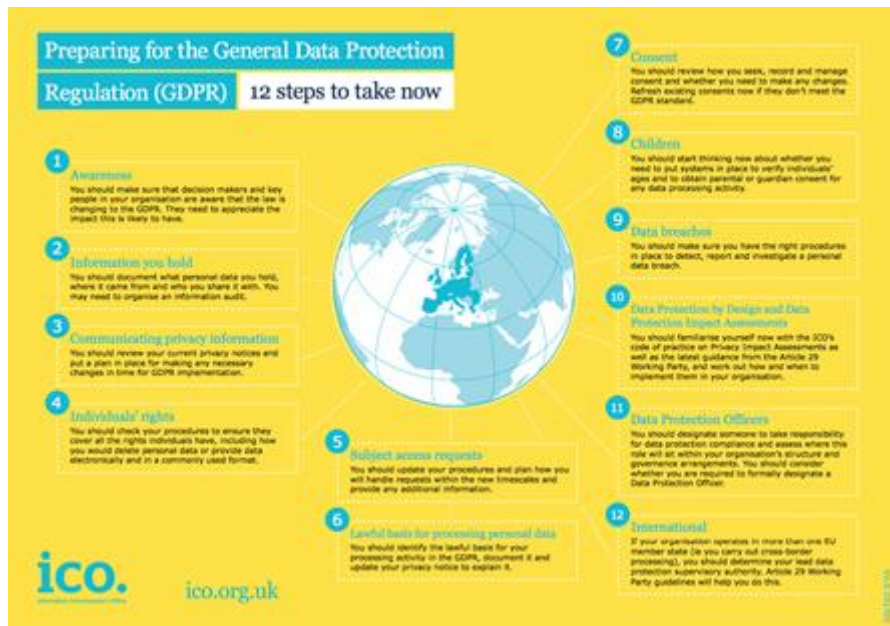
REGIONAL ALLIANCES WAY FORWARD

Five East Anglian charities representing a total investment of £1m a year came together at the Farmers Club in Bury St Edmunds to share their objectives, current projects and challenges. The meeting built on an already willing spirit and track record to work more closely together. This model of charities working together, and alongside industry, is proving highly successful.

- avoids replicating research
- addresses the biggest challenges
- ensures quality outcomes and impacts

A number of charities, many in the South West, are working with the AHDB to support a new project at Nottingham University on optimising the health and welfare of dairy and dairy-cross bred calves.

As mentioned above, the AFCP's remit for 2018 is to further stimulate this type



The key objective behind the new EU rules coming into force on May 25 this year is to give back individuals control of their personal data. Much tighter controls and transparency of what information is collected, how it is used and for what purpose are now required.

So this affects many AFCP members – those who receive donations from personal benefactors. The collection, consent and storage of any personal data will now need to be reviewed and actions taken by **May 25** to avoid breaching the new rules.

If, like the AFCP itself, your membership and data is linked to organisations, rather than personal data on individuals, then the GDPR does not apply.

The Small Charities Commission is a very useful starting point for advice and I would recommend attending the GDPR training days. The AFCP is a member of the [SCC](#) and it appears there is no restriction on the number of people from the AFCP that can attend these days. So as an AFCP member you would be eligible to attend these training days. Several GDPR training days are being held in late March in London and you can sign up at 'upcoming events' on the [SCC](#) website.

We will be including information on AFCP Policy on processing of personal data on the website and in our next newsletter.

Meanwhile these 12 steps (above) from the ICO provide a useful overview – and a call to action!

MORE LEADERSHIP NEEDED

The Worshipful Company of Farmers have a strong track record in inspiring new leaders for the sector. To that end the WCF support several training events including the:

- Advanced Course in Business Management at the RAU, Cirencester
- The Challenge of Rural Leadership Course at The Duchy College, Cornwall
- MBA and Business Growth Programme at Cranfield University

This is a great opportunity for other charities to nominate, or sponsor, a suitable individual for one of these leadership courses. “The business skills and experience they gain on these courses, alongside meeting other like-minded and ambitious individuals, is hugely important for the future of our industry”, says WCF’s Richard Whitlock. If any charities are interested to learn more about how they can play a part in these leadership courses, please contact richard@richardwhitlockltd.co.uk



**ARE YOU AN INDIVIDUAL SEEKING
CHARITABLE FUNDING?**

You're a researcher, a student, maybe planning to do a PhD or CPD to further your career. You have project in mind. In involves...

FIND OUT MORE



**ARE YOU A CHARITY SEEKING
CHARITY PARTNERS?**

You're a charity administrator, Trustee or Board Member and keen to make best use of your available research or grant monies, but in all cases...

FIND OUT MORE



**ARE YOU A CHARITY SEEKING R&D
OR EDUCATIONAL PARTNERS?**

You're a charity administrator, Trustee or Board Member, and keen to make best use of next year's available research or grant...

FIND OUT MORE



**ARE YOU AN INDIVIDUAL SEEKING
CHARITABLE HELP OR SUPPORT?**

The UK farming and food community can sometimes face extreme financial hardship. Fortunately there are charitable institutions...

FIND OUT MORE

AFCP Contacts

Graham Jellis (Chairman): graham.jellis@gmail.com
Debbie Beaton (CEO): debbie_beaton@icloud.com
Elizabeth Stephens (Company Secretary): elizabeth@iagre.org

BOARD DIRECTORS:

Stuart Burgess, Chris Moody, Philip Richardson,
Anthony Burgess, Rev Gordon Gatward, Phil le Grice

AFCP was registered as a company limited by guarantee in February 2008 and became a registered charity in June 2015. The Board and its Directors and advisors represent a range of charities and organisations from across the UK.

You have received this email because you have subscribed to
AFCP The AgriFood Charities Partnership
If you no longer wish to receive newsletters please email to unsubscribe